

# AIRECELL HC

## High Capacity Gasket Seal HEPA Filters

### Description

AireCell HC HEPA filters have been designed to meet the needs of critical applications where HEPA filtration is required. The AireCell HC HEPA filters have been designed for optimum performance and provide a lower operating cost in both new and existing systems. AireCell HC HEPA filters are manufactured from the highest quality of materials under strict quality control conditions, and are certified to ensure performance under the most critical of conditions for performance and leak-free operation.

AireCell HC HEPA filters are rated at H14 to EN 1822:2009. Optional rating of U15 to EN 1822:2009 is also available.

Typical applications for AireCell HC HEPA filters include, medical facilities, universities, pharmaceutical manufacturing, research facilities, food and dairy processing facilities and in any application where ultra clean air is a requirement.

### Construction

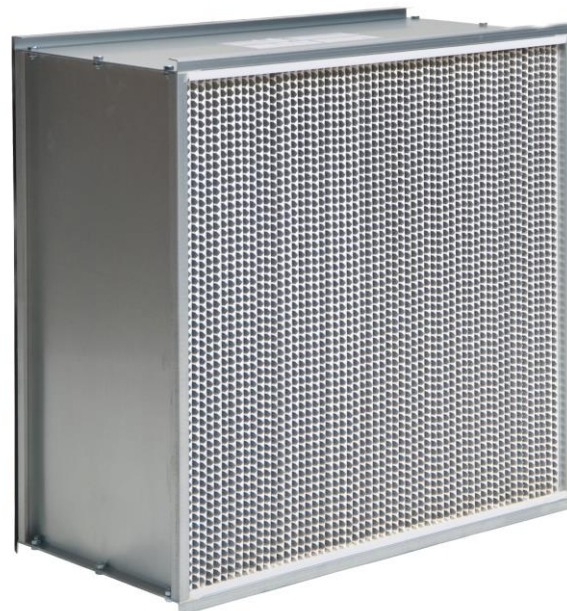
The AireCell HC HEPA filter casing is manufactured from 1.6mm galvanised steel and are constructed into a double turned flange arrangement. AireCell HC HEPA and ULPA filter media are manufactured from moisture resistant micro glass fibre media, which is highly resistant to moisture in high humidity environments.

The HEPA media is then formed into closely-spaced pleats held apart by corrugated aluminium separators to ensure uniform airflow throughout the media pack. The media pack is then potted into place by urethane sealant into the casing.

### Testing

Each AireCell HC HEPA filter is individually tested and certified to meet the customer's requirements for resistance and efficiency. Each filter is labelled noting tested efficiency, pressure drop, rated airflow and serial number. AireCell HC HEPA filters have been designed to comply with the requirement of AS4260.1997.

When used with correctly selected mounting frames, housings or terminal modules, AireCell HC HEPA filters will easily pass AS1807.6 & AS1807.7 Final Filter Integrity test carried out by a NATA registered laboratory.



AireCell HC HEPA Filter

### Options

- 304 or 316 Stainless Steel
- Marine Plywood Casing (non ferrous applications)
- Polypropylene Separators
- Upstream & Downstream Faceguard Screens
- Non-standard Sizes Readily Available
- Rated U15 to EN 1822:2009
- Box Style Configuration

Model	Rated Airflow Volume (l/sec)	Pressure Drop (Pascals)		Actual External Dimensions (mm)			Efficiency @ 0.30µ	Weight (kg)
		Initial	Final	Height	Width	Depth		
AP9119002	332	250	500	305	610	292	99.99	11.8
AP9119305	665	250	500	610	610	292	99.99	17.0

Airepure Australia Pty Ltd

A.B.N. 16 085 671 129

Email: [info@airepure.com.au](mailto:info@airepure.com.au)

Web: [www.airepure.com.au](http://www.airepure.com.au)

The information provided in this brochure is accurate at the time of printing to the best of Airepure Australia's knowledge, however, it should not be relied upon. Circumstances differ with every installation and location therefore suitability of all Airepure products should be confirmed with a qualified Airepure Technical Representative. Rev 1015 ©Airepure Australia 2015

Ph. 1300 886 353

